

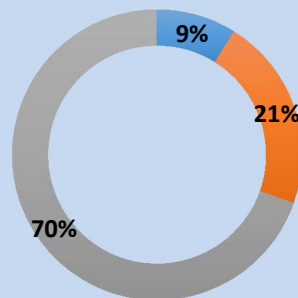


# “COVID- 19 Enterprise Impact” Survey

## Results

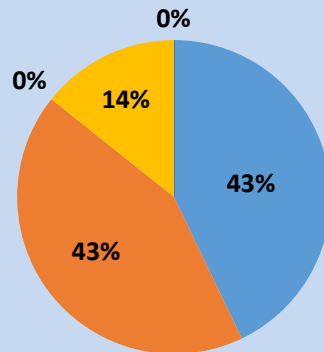
The following depicts the results from 81 respondents on how Covid-19 has impacted their businesses and the ways in which they have had to adapt.

### Impact on Revenue/Sales



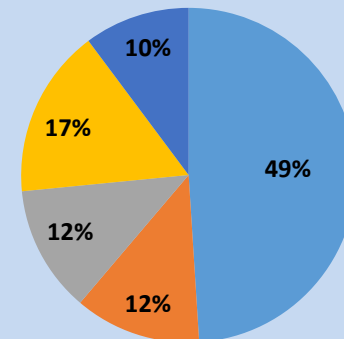
■ Increased ■ Remained the same ■ Decreased

#### Increase in sales/revenue



■ >20 ■ 16-20% ■ 11-15% ■ 5-10% ■ <5%

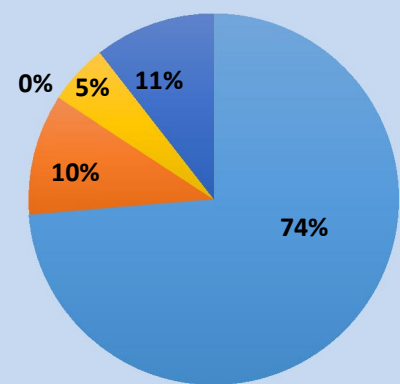
#### Decrease in sales/revenue



■ >20 ■ 16-20% ■ 11-15% ■ 5-10% ■ <5%

Sales/Revenue of companies have been affected considerably. The impact on sales/revenue range from <5% to more than 20%.

### Degree of Staff Reduction

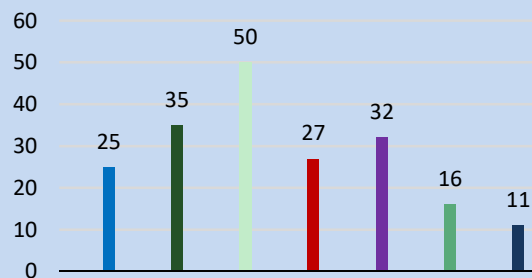


■ 1-10 ■ 11-20 ■ 21-30 ■ 30-40 ■ >40

23% of organizations have had to reduce their staff numbers ranging from 1 to over 40 persons.

96% of respondents have noted the alternative work arrangements implemented

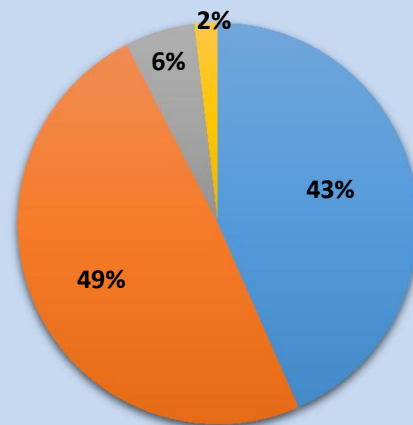
### Alternative Work Arrangements



Completely working from...  
Staggered Shifts  
Reductions of hours in office  
Flexible work sites  
Flexitime  
Compressed work week  
Other

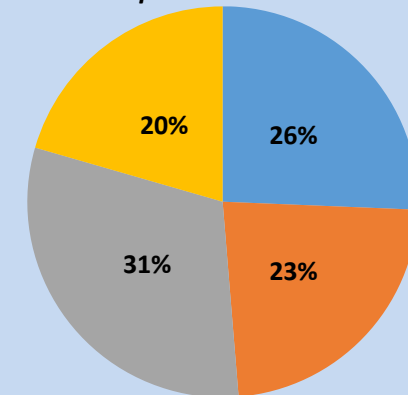
Respondents have gauged the effectiveness of the alternative arrangements.

### Effectiveness of Implemented Arrangements



■ Very effective ■ Somewhat effective  
■ Somewhat ineffective ■ Very ineffective

### Considered Alternative Work Arrangements to be implemented Post-Covid



■ Completely working from home ■ Staggered Shifts  
■ Reductions of hours in office ■ Other

75% of organizations would be willing to keep these alternative work arrangements in effect post-covid.